

***Artemisia maritima* L.**

Sea Wormwood

Native

GB: Least Concern

England: Near Threatened

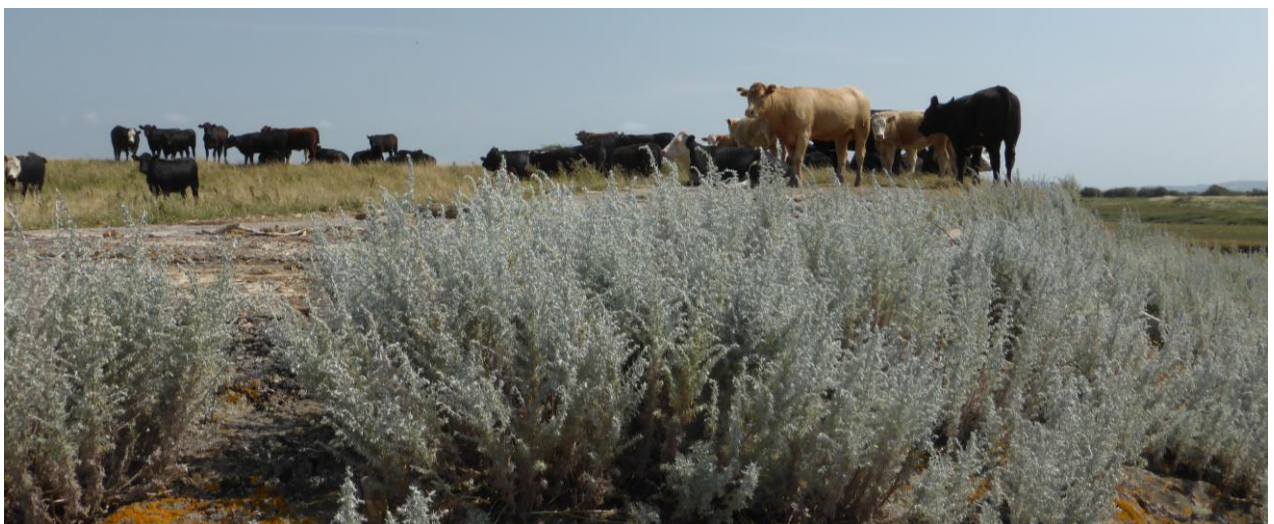
VC5 Scarce; VC6 Not Scarce

A decumbent perennial herb of the drier parts of saltmarshes, sea walls, shingle and the banks of tidal rivers. In VC5, recorded by Coleman for the Minehead area (Murray, 1896). Found in 1979 at Porlock Weir by D. Ranson and noted as locally plentiful there by Roe (1981), but last seen in that area in 1983 by Caroline Giddens (Green *et al.*, 1997). In 1914, recorded at Lilstock and Stolford by E.S. Marshall; found in 1992 at Lilstock (ST171453) by Ian Green, but there have been no subsequent records for that area. In VC5, now restricted to sites in Bridgwater Bay and the Parrett Estuary. Murray (1896) included a record for Steart Marsh by J.W. White; more recently it has been found further west at Wall Common and Catsford Common. First recorded from Stert Island in 1824 (White, 1912), it was still present on the island in 2007. J.C. Collins noted that it was “Abundant on both sides of the river Parret [*sic*], towards the mouth” (Watson, 1837). There are recent records for the Parrett estuary from Stert Point south to Starsland Clyce. In VC6, known to Murray (1896) beside the Parrett, on saltmarsh between the mouths of the Brue and Parrett, in the Axe estuary and in many places along the coast between Clevedon and Uphill. It can still be found in all of those areas. In addition, White (1912) knew this species from sites north of Clevedon: on a low cliff west of the Nore near Portishead, on salt marshes near Portbury, and by St George’s Wharf near Pill. It was still known from these sites before 2000, recorded from Margaret’s Bay (west of the Nore), Portbury Wharf and around Royal Portbury Docks (which has developed on the site of St George’s Wharf), and additionally beside the Avon estuary at Pill, all mapped by Green *et al.* (2000). There are no recent records from any of these sites: it may be overlooked, although may have been lost as the saltmarshes between Portishead and Pill have become rank and overgrown. The only post-2000 record north of Clevedon was made in 2019, when David Hawkins discovered plants on a rock at Battery Point, Portishead. This apparently new site suggests that this species may still be found at other sites in that area. *Artemisia maritima* is scattered around the coast of Britain and Ireland, but has been lost from some sites, a situation mirrored in Somerset.

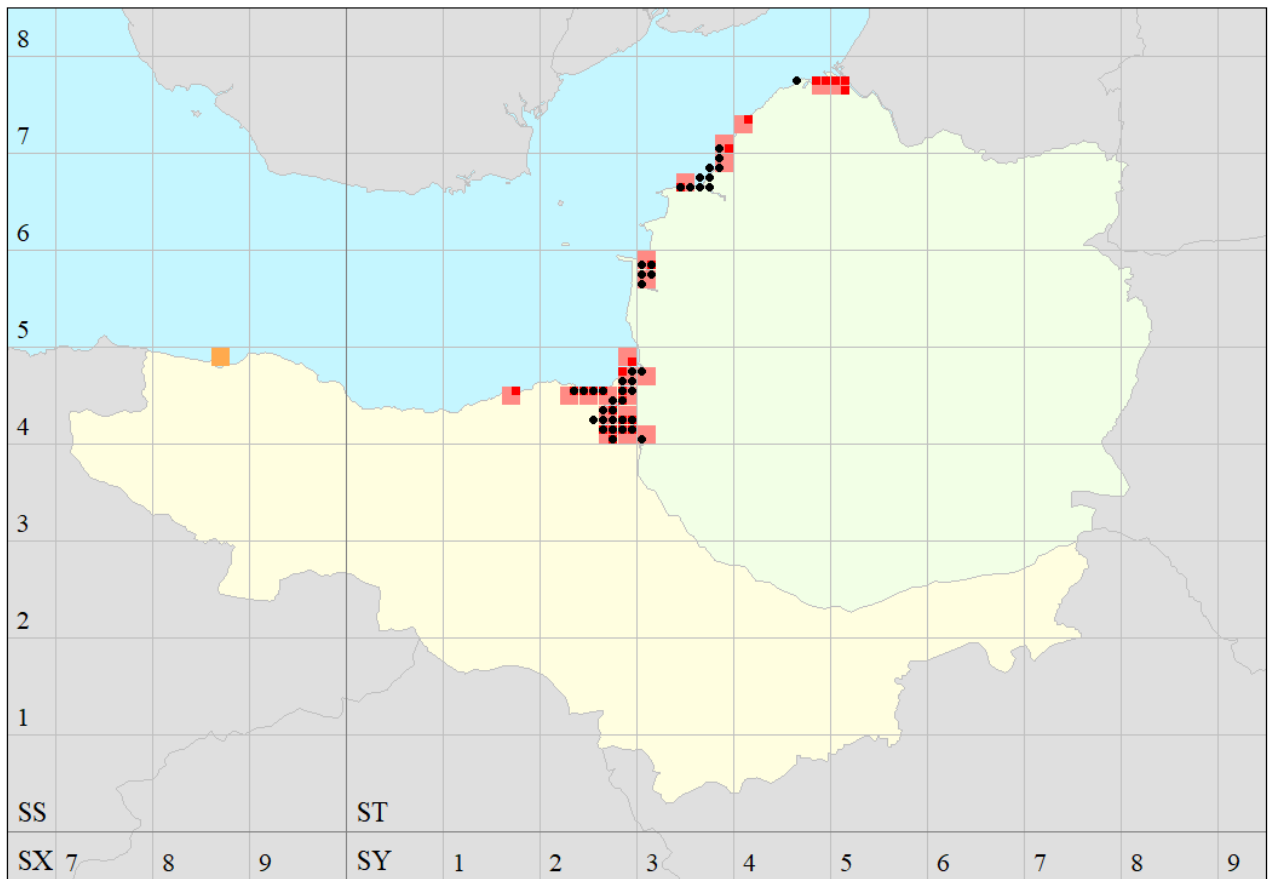


Artemisia maritima at Woodspring Bay (2011). Photo: HJC

VC5					
Catsford Common	SSSI	ST233458	2017	CoL, SJP	Large patches on common
Catsford Common	SSSI	ST23454585	2018	GEL, ITS, RFitzG	Few in brackish grassland
Catsford Common	SSSI	ST234459	1989	IPG, PRG, <i>et al.</i>	Coastal areas
Catsford Common	SSSI	ST236458	1991	RFitzG	Shingle bank.
Catsford Common	SSSI	ST23814572	2021	GEL, RFitzG	Large number near sea wall
Catsford Common	SSSI	ST23984557	2021	GEL, RFitzG	Scattered by path on upper saltmarsh
Catsford Common	SSSI	ST24064553	2021	GEL, RFitzG	Large area with scatterd plants
Catsford Common (E)	SSSI	ST24414532	2022	GEL, LE, SJP	Saltmarsh
Catsford Common (E)	SSSI	ST24624523	2022	GEL, LE, SJP	c. 5 m sq at the base of shingle ridge
Catsford Common (E)	SSSI	ST24664522	2002	EJMcD, BSBI	
Catsford Common (E)	SSSI	ST24674522	2005	SRPG	In short turf of saltmarsh grassland
Catsford Common (E)	SSSI	ST24814520	2005	SRPG	In crevices on seaward side of sea wall
Wall Common	SSSI	ST258452	1989	IPG, JM, DM	Scattered along the coast.
Wall Common	SSSI	ST259454	1996	JP	Edge of muddy saltpans & saltmarsh
Wall Common	SSSI	ST25974533	2002	EJMcD, BSBI	
Wall Common	SSSI	ST26044542	2018	SRPG	Large patch on edge of shingle ridge
Wall Common	SSSI	ST26214544	2021	GEL, AB, APR, LE	Patches with seed heads still in place
Stert Point	SSSI	ST2847	1989	IPG, JM, DM	
Stert Island	SSSI	ST29284790	2007	EJMcD, SJP, KP, JBu	Several small plants in stabilised dune
Stert Island	SSSI	ST290487	1992	PRG	Thinly scattered on small island
Fenning Island	SSSI	ST288469	2006	EJMcD, SJP, RGC	Many plants
Fenning Island	SSSI	ST28734673	2012	BSBI, WFS, SRPG	Hundreds of plants in grazed grassland
Fenning Island	SSSI	ST28644665	2022	SJP, GEL	Very large number on saltmarsh
Fenning Island	SSSI	ST284467	2006	EJMcD, SJP, RGC	Many plants
Fenning Island	SSSI	ST28404662	2009	EJMcD, SJL, PS, UJ	Hundreds, saltmarsh near deep creek
Fenning Island	SSSI	ST28304675	2009	EJMcD, SJL, PS, UJ	1 small plant on bare soil in bird scrape
Fenning Island	SSSI	ST282462	2006	EJMcD, SJP, RGC	Many plants
Fenning Island	SSSI	STT280450	2011	SJP	At base of sea wall
Stear, SE of	SSSI	ST2844	1990	PRG, ACL, PH	Banks of the River Parrett
Stear Marshes	SSSI	ST27194451	2018	SRPG, WFS	One clump at edge of River Parrett
Stear Marshes	SSSI	ST27414443	2018	SRPG, WFS	Many plants at edge of River Parrett
Combwich	SSSI	ST2542	2003	SJP	
Tuckett's Clyce	SSSI	ST26554175	2021	GEL, LE, SJP	2 x1m patch
Tuckett's Clyce, SE of	SSSI	ST26884134	2014	JP	On mid shore line, to ST26944125
Tuckett's Clyce, SE of	SSSI	ST26904131	2021	GEL, LE, SJP	Small patch upper saltmarsh
Tuckett's Clyce, SE of	SSSI	ST26944125	2014	JP	On mid shore line, to ST26884134
River Parrett (W bank)	SSSI	ST27164102	2014	JP	1 plant only at base of eroding sea wall
Stallington's Clyce, W of	SSSI	ST27584086	2014	JP	Many plants
Pippin's Clyce	SSSI	ST28174130	2014	JP	On stony sea wall banks above HWM
River Parrett (S bank)	SSSI	ST28644234	2014	JP	Base of former eroded sea wall
Chislett		ST2941	1992	IPG, MMD, ES	Banks of the River Parrett
Starsland Clyce		ST30144060	2014	JP	Surviving grazing at base of sea wall



Artemisia maritima at the mouth of the River Yeo (2014). Photo: HJC



Distribution of *Artemisia maritima* in Somerset mapped using MapMate. Black dots: post-2000 records; pink squares: 1987-1999; sepia squares: pre-1987 records



Artemisia maritima at Hook's Ear, Kingston Seymour (2014). Photo: HJC